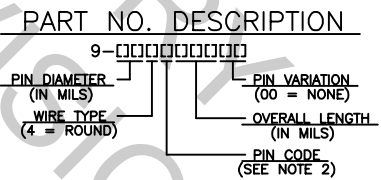
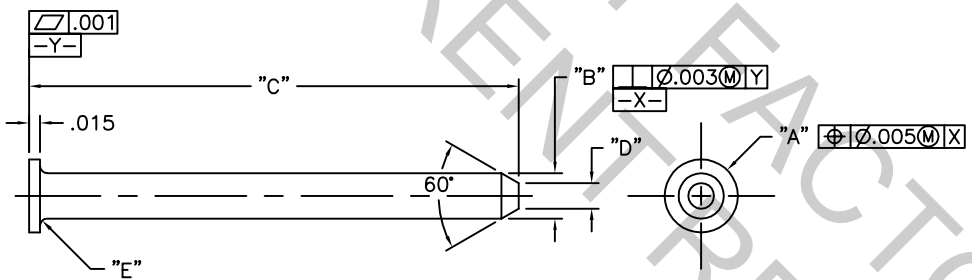


PARTS LIST								
PART NUMBER	PIN CODE	DIM. A	DIM. B	DIM. C	DIM. D	DIM. E	PKG. QTY.	REV. LEVEL
9-294A37500	A	Ø.050	Ø.029±.001	.375	Ø.015±.005	R.005 MAX	-	H
9-404A67000	A	Ø.080	Ø.040±.001	.670	Ø.025±.010	R.010 MAX	10,000	H
9-814A67000	A	Ø.120	Ø.081±.001	.670	Ø.050±.010	R.010 MAX	5,000	H
9-624V67000	V	Ø.100	Ø.062±.001	.670	Ø.035±.010	R.010 MAX	10,000	H
9-624C67000	C	Ø.100	Ø.062±.001	.670	Ø.035±.010	R.010 MAX	10,000	X1
9-624T39000	T	Ø.100	Ø.062±.001	.390	Ø.040±.010	R.015 MAX	10,000	X1

REV	REVISION RECORD	ECN	BY	APVD	DATE
G	REDRAWN & REVISED (DWG. WAS "B" SIZE) PER EWR'S 102520 & 102521	502422	GLT	SF	10-28-04
H	ADDED PART INFO PER CDR# 300962	503009	GLT	SB	11-03-04



- NOTES: (UNLESS SPECIFIED OTHERWISE)
- INTERPRET DRAWING IN ACCORDANCE WITH ANSI Y14.5-1982.
 - PIN CODES (MATERIAL):
 "A"= ALLOY C26000, CARTRIDGE BRASS.
 "C"= ALLOY C10200, OXYGEN-FREE COPPER.
 "T"= ALLOY C14500, TELLURIUM COPPER.
 "V"= ALLOY C19700, FULL HARD TEMPER.
 - PART MEETS THE SOLDERABILITY AND PLATING DURABILITY REQUIREMENTS AS DESCRIBED IN IPC/EIA J-STD-002A, TEST METHODS A & D, CATEGORY 3.
 - ALL DIMENSIONS APPLY AFTER PLATING.
 - FINISH: POST-PLATED, .0003-.0005 THICK 90/10 MATTE Sn/Pb PER SAE-AMS-P-81728 AND AUTOSPlice SPEC. ES-0106, OVER .0001-.0002 THICK SULFAMATE NICKEL PER QQ-N-290, CLASS 2.
 - PINS DENOTED IN PARTS LIST AS "X" REV'S. ARE UNRELEASED ITEMS.

CUSTOMER DRAWING

This drawing and the information set forth hereon are the property of Autosplice, Inc. and are to be held in trust and confidence. Publication, duplication, disclosure, or use for any purpose not expressly authorized in writing by Autosplice, Inc. is prohibited.	MATERIAL: SEE NOTE 2	TOLERANCES UNLESS OTHERWISE SPECIFIED, ALL DIM. ARE IN INCHES DECIMALS: .XXX±.01 ANGULAR: ±5°	AUTOSPlice INC. 10121 Barnes Canyon Road San Diego, California 92121 (602) 535-5077
	FINISH: SEE NOTE 5	TITLE: Pin, SMT Nailhead PART NO.: C 0AE89 C9- <input type="text"/> SCALE: - (DWG FILE NO. C9- <input type="text"/> In.dwg) SHEET 1 OF 1	DATE: W.S. 11-02-03 DESIGNED: V.L. 11-02-03